

East Anglia Green Energy Enablement (GREEN) Project

Reinforcing the electricity network in East Anglia

Project update newsletter
February 2023

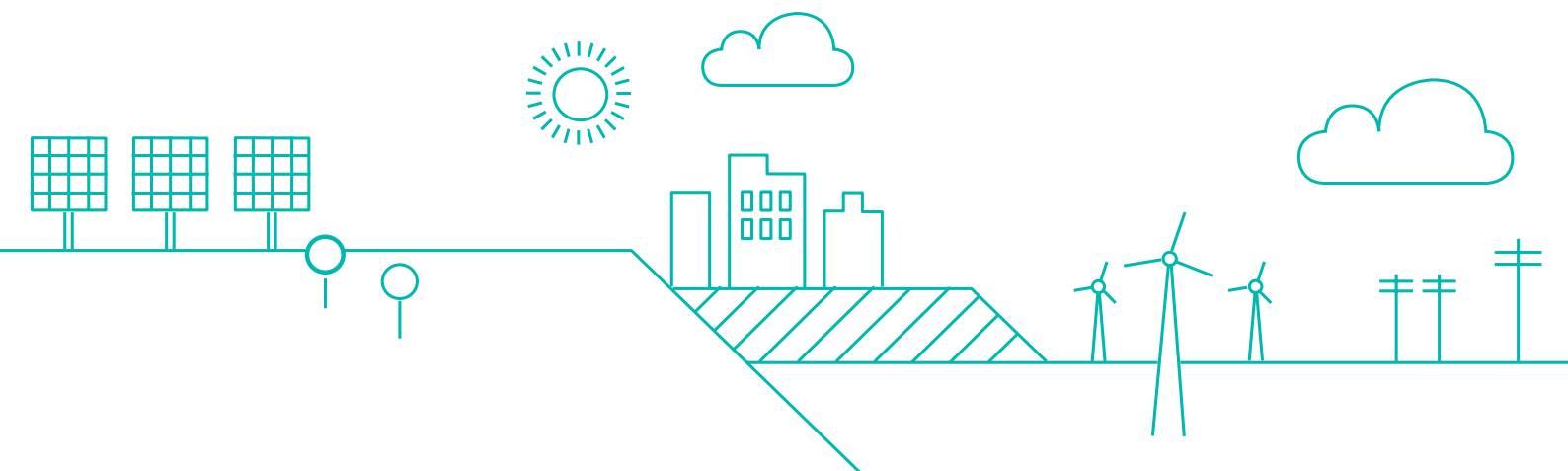
Thank you to everyone who took the time to take part in our first stage of consultation on the proposed East Anglia Green Energy Enablement (GREEN) project.

We were pleased to receive such a high number of responses to the consultation and this feedback is vital to help inform decisions we make about the project, including refining the route of the corridor.

Since the close of consultation, we have taken the time to carefully review your feedback in detail. The information you gave us, along with findings from environmental surveys and assessments, is helping us to develop our plans in more detail. We will consult with you again on our more developed proposals in 2023.

In this newsletter we:

- explain our proposals
- provide an overview of the consultation
- summarise the main feedback themes
- answer your frequently asked questions
- set out what happens next.



The project

About the project

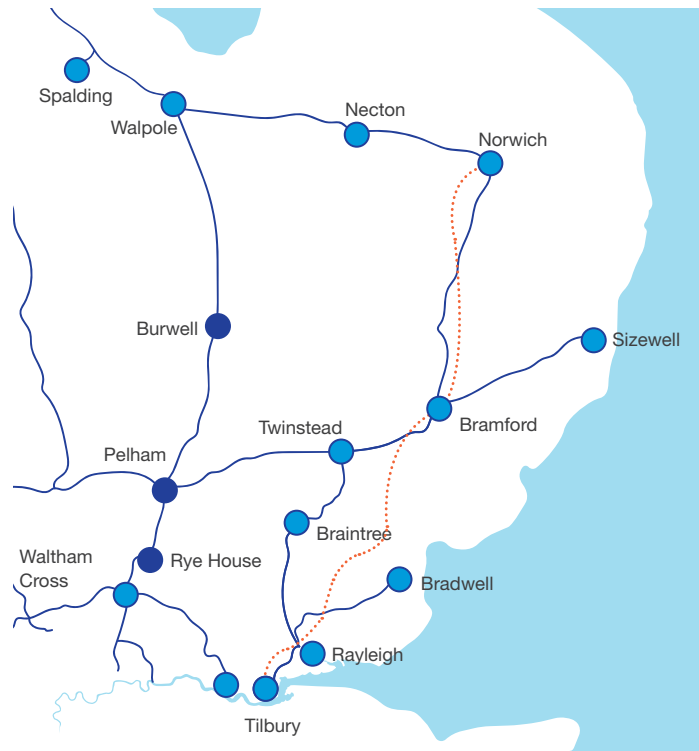
The East Anglia Green Energy Enablement (GREEN) project is a proposal to build a new high voltage network reinforcement between Norwich, Bramford and Tilbury to carry proposed clean green energy to the homes, businesses and other places we live, work and play.

The project will not only support the UK's world-leading target to tackle climate change, but will also increase energy security, resilience and long-term affordability.

The Government has set a commitment to reach net zero greenhouse gas emissions by 2050 and an ambition to connect 50 GW of offshore wind by 2030 – enough energy to power every home in the country.

That's a huge amount of wind power that needs to connect to the network, and our existing high voltage electricity network in East Anglia doesn't have the capability to reliably and securely transport such a huge increase in energy. We are already investing significantly in upgrading the existing network, but we need to go further to deliver the capability needed.

That's why we are proposing a new high voltage network reinforcement to carry enough clean, green energy to power every home in the UK.



Key

- Existing National Grid overhead line
- New network reinforcements
- Power control devices installed
- Existing National Grid substation

Visit our website:

www.nationalgrid.com/east-anglia-green for more information about the project and to register for updates.

Listening to local communities

Between April and June 2022 we held our first stage of consultation, writing to over 52,000 homes and businesses in the local community.

The purpose of our consultation was to:

- introduce our proposals and explain why we need to reinforce our network in East Anglia
- explain the options that have been considered and how we identified a preferred corridor and substation site
- listen to local communities and stakeholders, answer questions and ensure stakeholders had the opportunity to provide feedback on our work to date.

More details on our proposals, including the information we presented during our first stage of consultation, can be found on our website. This includes all consultation materials and frequently asked questions.



Our consultation in numbers



12

public information events



2,821

information event attendees



23

public and parish council webinars



456

webinar attendees



3,400

individual feedback responses

Your feedback

Feedback we receive is invaluable to us in understanding views on our work to date and to inform how we develop our proposals.

In spring we asked for feedback on the preferred corridor and graduated swathe along with associated substation works, a new substation site and what issues are important to the communities in these areas. The most common topics raised, and how we are addressing these, are summarised below.

We will publish a feedback report at our next consultation, summarising all the feedback we have received and how it has influenced our proposals. Further information can be found on the Frequently Asked Questions section of the project website: www.nationalgrid.com/east-anglia-green

You said

How we will use your feedback, and what happens next

Can you underground the cables at other locations across the route?

Our preliminary work has indicated that the route should be underground in the protected area of the Dedham Vale Area of Outstanding Natural Beauty (AONB).

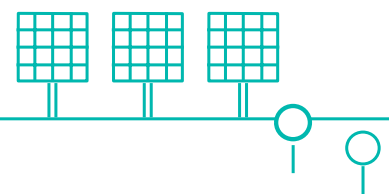
Your feedback is important to us and helps identify locations to consider for additional mitigation such as undergrounding. We are reviewing your suggestions and the outcome of this work will be presented at our next consultation.

We're concerned about the disruption caused to the environment by undergrounding cables.

You asked how any potential disruption would be managed from the construction of underground cables in the AONB.

We're carrying out surveys and assessments across the route to understand any potential environmental or ecological impacts and how we could reduce any disruption.

We are speaking to technical stakeholders to understand their views and identify any mitigation measures that may be required as we develop our proposals.





You said

How we will use your feedback, and what happens next

Why are you not consulting on pylon design options?

You asked why we aren't consulting on pylon design.

At our first public consultation we were primarily consulting on the preferred corridor and graduated swathe, and to inform this we had assumed use of steel lattice pylons at this time.

Alternative designs include lower-height lattice pylons, which are shorter but wider versions of the regular lattice designs, and the mono-pole 'T-pylon' which is being used on the Hinkley Connection Project. These will be considered as we further progress the project.

This project will have an impact on our property prices and being able to sell in the future.

Concerns have been highlighted about the impact on the value of properties.

House prices depend on a number of different factors. We recognise that the visual impact of any new overhead line is likely to be a significant issue for many local communities, and we try to avoid individual properties as much as possible. If anyone has specific concerns we encourage you to contact us to talk about these.

Why can't you parallel with the existing line in this area?

When considering how to route a new line between Norwich and Tilbury, we looked at siting the new pylons close to the existing ones where there are existing routes. Our studies showed that we would need to divert around numerous existing homes and woodland which would require more robust angle pylons with additional visual and environmental effects. We feel the corridor we have put forward would have less impact.





Frequently asked questions (FAQs)

As well as comments on the East Anglia GREEN proposals, other questions and comments were raised that we would like to address.

How will you work with communities?

We are committed to working closely with local communities and ensuring their voice is heard throughout the development of the proposals.

We recognise that the early stage of consultation can bring uncertainty about what this project means for you. Your feedback and knowledge of your local area is helping us to develop the best possible outcome for the project, while supporting the country's ambition to deliver a clean, resilient and affordable future energy system.

Our next public consultation will include more detail on the route and location of the proposed infrastructure, including pylons, and what we will be doing to minimise the impact on local communities living nearby. We will be asking for your feedback on those proposals. We will also publish a feedback report to show how your feedback from the spring 2022 consultation has been considered in detail.

If you have any specific concerns or questions, please do get in touch with us.

Who has the final say on East Anglia GREEN?

East Anglia Green is considered a Nationally Significant Infrastructure Project, and will require planning consent from the Secretary of State for Business, Energy and Industrial Strategy. Before we apply for consent, we consult local stakeholders and scrutinise the feedback we receive to help shape our proposals. The Planning Inspectorate will then consider our application and make a recommendation to the Secretary of State, who ultimately decides whether consent should be granted.

Why do we need this reinforcement project?

The UK Government has set clear targets for the development of clean power, including up to 50GW of offshore wind by 2030. National Grid is at the heart of delivering this ambition, which requires us to reinforce our network across the country.

The growth in new energy generation from offshore wind and nuclear power over the next decade is expected to increase generation in the East Anglia region by 15,000 MW, whilst interconnection with other countries is expected to connect more than 4,500 MW of new interconnection into East Anglia.

The network in East Anglia was built in the 1960s to cope with the level of demand at that time, and currently carries around 3,200 MW of electricity generation. This means that there will be more electricity connected in East Anglia than the network can currently accommodate.

Our existing power lines do not have sufficient capacity to accommodate this new generation. We are already carrying out work to upgrade the existing transmission network in East Anglia, however these upgrades alone will not be sufficient.

East Anglia GREEN is a key part of our wider investment programme to upgrade our electricity transmission network in East Anglia to ensure we meet this future energy transmission demand.





Why was an offshore option not taken forward?

As we scope our projects, we consider numerous technology solutions. An offshore solution was considered as part of our initial strategic proposal to upgrade the network in East Anglia, and that work was summarised in our Corridor Preliminary Routeing and Substation Siting study (CPRSS). National Grid's appraisals, which were based on our knowledge of the network and understanding of the capacity and costs of developing subsea links.

New low carbon generation is already in the process of connecting into the Norwich area and therefore an offshore connection would need to take the power from there to the Tilbury area.

An offshore connection would have a third of the capacity of the proposed overhead connection. To transfer the anticipated levels of power generation, three offshore connections would be required along with associated infrastructure such as converter stations near the existing substations at Norwich Main substation and Tilbury.

We would also need to build onshore connections from the converter station sites to the coast. This scale of work would have its own environmental impacts and would cost substantially more than the onshore option we have taken forward. In view of this, we concluded that the onshore option best meets the obligations set out under our Licence and by Ofgem to be economic and efficient.



Next steps

We are continuing to carry out surveys and assessments to build detailed knowledge of the route and we are in discussions with landowners along the route to agree access for surveys.

Surveys will help us to consider any potential environmental effects, archaeology and historic features, as well as visual impact.

As part of our ongoing commitment to stakeholder engagement, we will hold a public consultation on our emerging proposals. The consultation will help reduce uncertainty and will give local communities an opportunity to comment as we continue to develop the scheme in more detail.

We will publish a draft indicative alignment which will show proposed locations for pylons, underground cables, cable sealing end compounds and connection substations. And we will explain how consultation feedback, along with the findings of surveys and assessments, have informed our decision making to date.

We will ask for feedback on the draft indicative alignment and if there is anything else we should consider as we further develop the project.

More information about the consultation, including dates and how to participate will be published nearer the time. We will write to local residents along the route as well as stakeholder groups and elected representatives. We will hold events, post updates on the project website and publish information in local newspapers.

The consultation will be non statutory. There will be a further opportunity to comment on our proposals when we hold a statutory consultation before we submit an application for a Development Consent Order (DCO) to the Planning Inspectorate.

We will continue to publish information on the website and you can stay updated on our project by registering your email on our website or calling us on **0800 151 0992**.
(Lines are open Monday to Friday 9:00am – 5:30pm)

Information for landowners

We have appointed Fisher German to help us contact landowners and occupiers to arrange access for any surveys and assessments. We will hold individual discussions with those whose land may be impacted by the project. Giving us permission to carry out surveys does not affect your right to make representations about our project.

We encourage all landowners to appoint an agent/surveyor to act on your behalf where we are asking to survey on your property. National Grid will reimburse any professional fees reasonably incurred in respect of all claims and advice on legal agreements. More information on this can be found on our website.

Contact us

www.nationalgrid.com/east-anglia-green

0800 151 0992

EastAngliaGREEN@nationalgrid.com

